

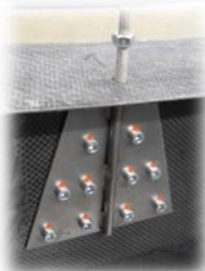
Flight Design Technik - Custom parts

Cargo pod for FlightDesign CTLS



The Cargo pod allows the owner of a CT aircraft to carry bulky packages “outside” the cabin and the regular baggage compartment. It was developed to take a folding wheelchair for disabled persons or a foldable bicycle with the CTLS. Also other goods up to 50 kg (110 lbs) are easy to store. The 4 point mounting system allows a single person to assemble or disassemble the pod in less than 10 minutes. The near neutral position to C/G and the aerodynamic shape avoid significant changes in the flight characteristics. The primary construction in carbon composite material is a guaranty for strength and lightweight. All materials are approved for aircraft use.

Details:



Flight Design Technik - Custom parts



Technical data:

Over all length	1420 mm (56")	Payload	50 kg (110 lbs)
Over all height	320 mm (13")	Empty weight	7.5 kg (16.5 lbs)
Over all wide	830 mm (33")	(Fittings included)	

Cargo compartment

Length	750 mm (30")	Door length	720 mm
Height	280 mm	Door height	250 mm
Wide	830 mm	Freight volume main	120 Liter (4,2ft ³)
		+ Front and Rear	35 Liter (1,4 ft ³)

Contact / Technical questions:

E mail : technik@flightdesign.com
Mail : Flight Design Technik, Am Flugplatz 4, D-15374 Müncheberg, Germany